

Product model: NetSafe DVR3000

Release Date : 2003/06/26

Document No.: TS03-0626

Author : Soo-Goog Lim

Report title: Data Size

Copyright © 2003 Win4NET

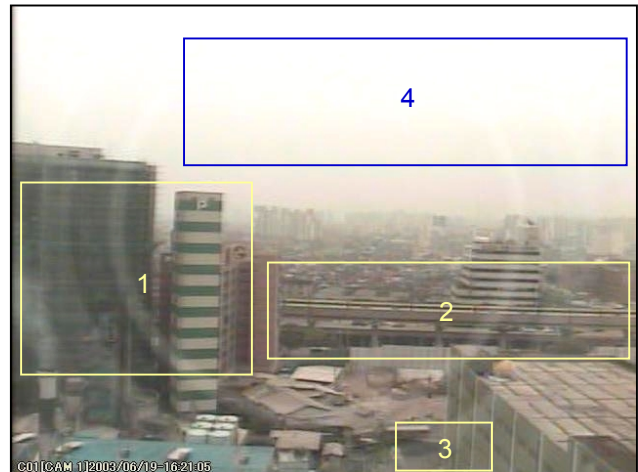
1. Test Environment

□ About Sample Image

To get a actual data size, we use sample image as above. Also for its accuracy all data was checked 3 times and get average size.

Due to Win4NET CODEC detects and recording changed area, data size could be different by its situation.(brightness, Hue & camera's signal).

* About camera signal : In case of your camera makes noise, this is seriously increase data size.



Sample Image

Comments about regions in Sample Image

Area 1

Smoke comes out from chimney and it moves left or right by wind.

Area2

Train moves in both way every 2 minutes and cars running all the time below it.

Area3

Peoples moving back and forth.

Area4

Sometimes airplane & helicopter's moving is detected.

System Specification

CPU : Pentium 4 – 2.8 GHz

RAM : 256 MB SDRAM

HDD : Maxtor 7200 RPM HDD

OS : MS Windows 2000 professional SP3

M/B : Gigabyte GA-8IRX

Software Version : Site version 2.0

2. Test Result

* average size of each frame

Res.	Quality	Sensitivity	Size Kb	Res.	Quality	Sensitivity	Size Kb
360 X 240	Low	7	1.4	360 X 288	Low	7	2.0
	Low	13	3.8		Low	13	4.6
	Normal	7	2.9		Normal	7	2.5
	Normal	13	6.5		Normal	13	6.8
	Fine	7	3.9		Fine	7	3.4
	Fine	13	8.4		Fine	13	9.1
	Super Fine	7	4.6		Super Fine	7	5.1
	Super Fine	13	8.8		Super Fine	13	10.5
720 X 240	Low	7	4.1	720 X 288	Low	7	3.6
	Low	13	6.5		Low	13	7.9
	Normal	7	5.7		Normal	7	4.2
	Normal	13	10.6		Normal	13	10.7
	Fine	7	8.6		Fine	7	5.5
	Fine	13	17.0		Fine	13	14.6
	Super Fine	7	10.9		Super Fine	7	6.9
	Super Fine	13	17.2		Super Fine	13	17.4
720 X 480	Low	7	6.1	720 X 576	Low	7	7.9
	Low	13	13.8		Low	13	15.3
	Normal	7	18.0		Normal	7	9.6
	Normal	13	24.6		Normal	13	22.0
	Fine	7	23.4		Fine	7	10.6
	Fine	13	30.8		Fine	13	29.4
	Super Fine	7	29.9		Super Fine	7	13.0
	Super Fine	13	37.9		Super Fine	13	34.9

NTSC

PAL

Estimation of DATA size

If you are using 160GB HDD with default setting in NTSC. (360x240 3fps, sen. : 7, normal)



Each frame size 2.9Kbyte.

$16(\text{ch}) \times 3(\text{fps}) \times 2.9 \times 60(\text{sec}) \times 60(\text{min}) = 501,120(\text{Kbyte}/\text{hour})$

$160,000,000 / 501,120 = 319.284(\text{hour})$

$319(\text{hour}) / 24(\text{hour}) = 13(\text{days})$ of continuous recording for 1 camera 3fps

* This is only a estimation value. Recording duration will be longer or shorter according to your situation.