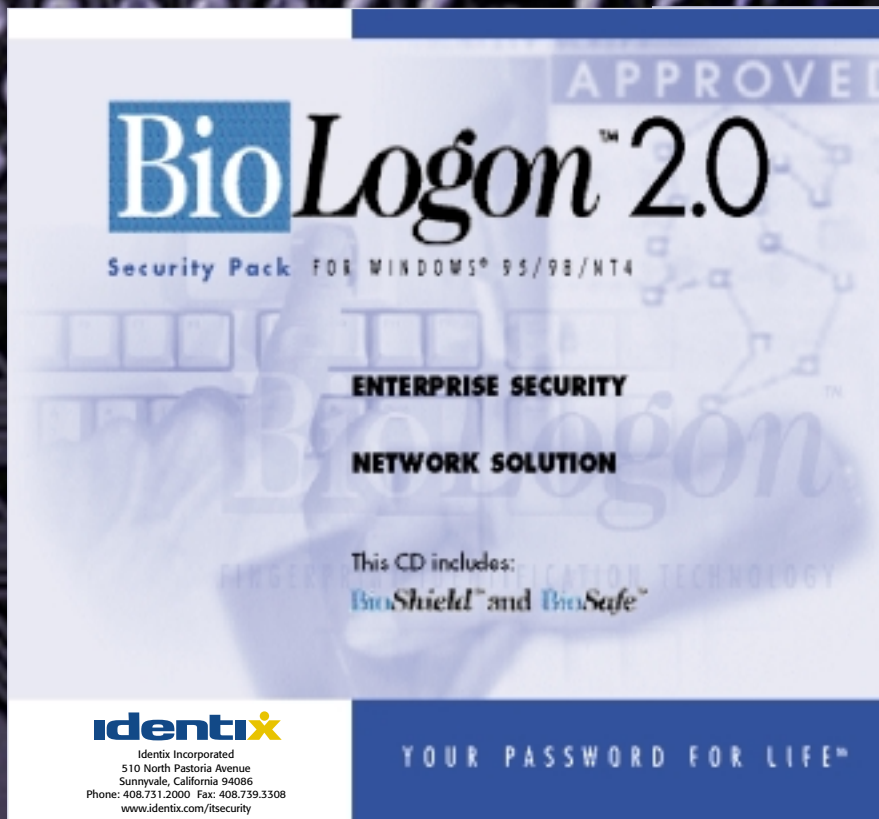


BioLogon 2.0 Security Pack

IT Security



Product Features

BioShield

- Controls access to applications, control panels, menus, or buttons
- Accelerates entry of typed information by "teaching" the system
- Enter passwords with a touch of your finger— nothing to forget
- Drag and drop interface, no custom programming
- Works with BioLogon™ 2.0 and BioCard™ Client for Windows®

BioSafe

- Encrypts and decrypts files/ folders to protect your valuable data
- Creates "safes" or groups of protected files and folders
- "Safes" can be shared between users, or kept to yourself
- Supports automatic 'unlocking' when you log on and 'locking' when you log off
- Works with BioLogon™ 2.0 and BioCard™ Client for Windows®

BioLogon™ 2.0 Security Pack includes BioShield and BioSafe software. These applications enhance the security and convenience of your BioLogon-enabled Windows® PC by adding protection when opening applications, a password bank and a file/folder encryption/decryption—all with a touch of your finger.

BioShield™ for Windows® provides protection for applications, menus, or buttons and automates repetitive typing - all with the touch of a finger. BioShield's drag-and-drop interface is simple to use and requires no programming. A password-protected application can be configured to remember' your password and insert it automatically when your finger is verified - no more passwords to forget!

BioSafe™ for Windows protects valuable files and folders by using encryption and a touch of your finger—only positively authenticated users are given access. "Safes" or groups of files/folders, are easy to create and can be shared among a workgroup, or kept to a single user. A "safe" can be made into a "package" and e-mailed to someone without being viewed or modified. The receiver enters a pass-phrase to unlock the "safe" and view its contents. A "safe" can be automatically opened when a user logs on and closed when a user logs off—provides great protection for laptops. Encryption certificates can be imported and exported, so "safes" can be accessed from different computers, including network servers or a local hard drive.

identix

one finger
one touch
one access



ONE PASSWORD FOR LIFE

product specifications

SYSTEM REQUIREMENTS

- 486/66 or Faster CPU
- 16MB RAM (32 preferred)
- CD-ROM Drive
- Properly configured Fingerprint Reader
- Microsoft Windows® 95/98 OSR2 or Windows® NT 4.0 with Service Pack 3 or greater
- BioLogon® or BioCard® software installed

HARDWARE DEVICES

- BioLogon™ products work with a variety of fingerprint readers including: keyboards and desktop peripherals from leading vendors like Compaq, KeyTronic, Cherry Corporation and SCM Microsystems.

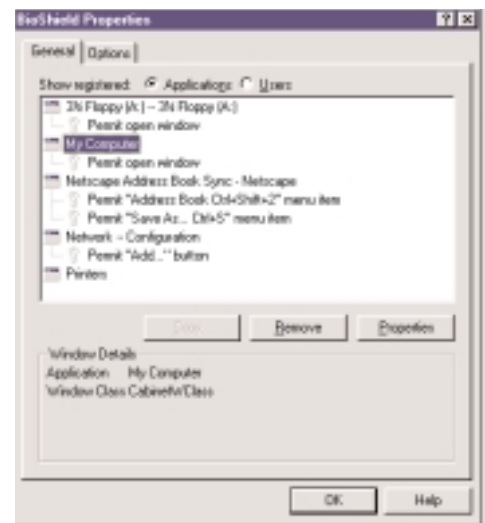
Other products in the BioLogon™ 2.0 Product Suite include:

- BioLogon® 2.0 Server for Windows®: Enterprise Network Security
- BioLogon® 2.0 Client: stand-alone or network logon
- BioCard® OClient: add a smart card to BioLogon Client
- BioLogon® SDK: integrate BioLogon™ with other applications

BioShield

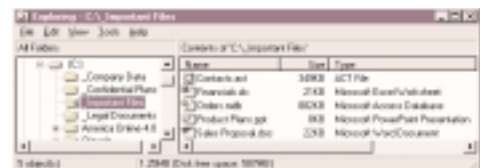


BioShield Tool Bar

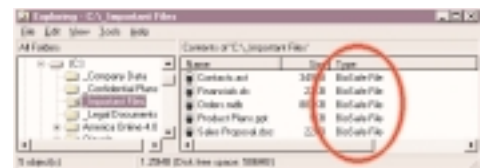


BioShield Properties

BioSafe



BioSafe decrypted file



BioSafe encrypted file



REPLACE HARD-TO-REMEMBER
PASSWORDS WITH ONE TOUCH
OF YOUR FINGER.

Information furnished by Identix in this data sheet is believed to be accurate. Products sold and licensed by Identix are covered by the warranty and patent indemnification provisions appearing in its purchase and license agreements. Identix reserves the right to discontinue production and change specifications and process at any time without notice. ©2000 Identix Incorporated. All rights reserved. BioEngine, ID Safe, BioLogon and DFR-300 are registered trademarks or trademarks of Identix. Microsoft and Windows are registered trademarks or trademarks of Microsoft Corporation in the United States and/or other countries. Rev. #1.03.00

identix
IT Division

Identix Incorporated
100 Cooper Court
Los Gatos, California 95032
Phone: 408.335.1400
Fax: 408.395.8076
www.identix.com/itsecurity