

Fingerscan V20



Fast and easy to use

Integrates easily into existing access systems

Field-proven technology

Revolutionary pricing

Designed for IT connectivity

One Touch & You're in

From corporate server rooms to daycare centers, the Fingerscan V20 is the right choice for access applications that demand convenience and security. Using field-proven, patented ID Safe biometric technology, the reader provides unparalleled functionality and ease of use. Quick and easy to install, the Fingerscan V20 is designed for both standalone and fully networked applications. It can be easily configured to locally control and monitor a door, or be set to seamlessly integrate into existing card-based systems. With its powerful Intel®-based processor, sleek ergonomic design and affordable price, the Fingerscan V20 makes other solutions seem obsolete. Extending the Identix legacy of innovation, the Fingerscan V20 is the first in a series of Identix products that usher in a new generation of universal access, delivering the foolproof security required in a rapidly changing world.

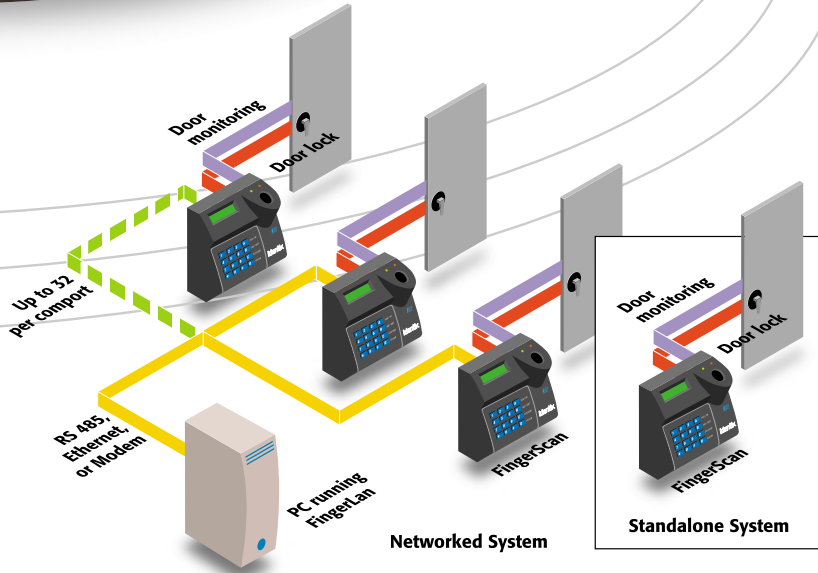
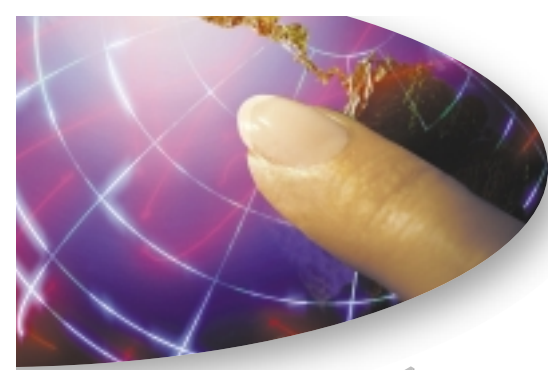
From corporate server rooms to daycare centers, the Fingerscan V20 is the right choice for access applications that demand convenience and security. Using field-proven, patented ID Safe biometric technology, the reader provides unparalleled functionality and ease of use. Quick and easy to install, the Fingerscan V20 is designed for both standalone and fully networked applications. It can be easily configured to locally control and monitor a door, or be set to seamlessly integrate into existing card-based systems. With its powerful Intel®-based processor, sleek ergonomic design and affordable price, the Fingerscan V20 makes other solutions seem obsolete. Extending the Identix legacy of innovation, the Fingerscan V20 is the first in a series of Identix products that usher in a new generation of universal access, delivering the foolproof security required in a rapidly changing world.

www.identix.com



Identix

Fingerscan V20



Simple

The Fingerscan V20 is so simple to use—enter your ID number through the integrated keypad or optional proximity reader, and with a touch of your finger, you're in. The unique, ergonomic integration of the proximity reader allows the card and finger to be read simultaneously in a fast, single presentation. Simple to integrate, the Fingerscan V20 slips into any existing or planned access control system using Wiegand protocol, including proximity. You can also use the reader in a standalone mode to completely control and monitor a doorway. In this mode, no additional controller hardware is required. And the Fingerscan V20's low cost makes it truly simple to justify for almost any application.

Convenient

What could be more convenient than one-touch access? With the Fingerscan V20, you no longer have to waste time and money administering lost or forgotten cards. Your finger is your "key." Enrollment is also fast and simple requiring only a single touch of your finger. Networking multiple Fingerscan V20 units allows users to enroll conveniently at any reader in the system. The user's biometric information is sent to the other units automatically. Networking can be accomplished via the RS485 standard or by using optional low-cost Ethernet or dial-up modem communications.

Secure

The uniqueness of each person's finger provides true security. Unlike keys or cards, a person's finger can't be lost or stolen, ensuring that only the right people are granted access. Since security demands can vary widely from nuclear plants to health clubs, the Fingerscan V20 provides adjustable security thresholds at both the system and user level. The reader can be easily tuned to fit the exact security requirements of your particular application and users.

Proven Technology

The Fingerscan V20 features ID Safe biometric technology from Identicator, a division of Identix. ID Safe technology is already being used in hundreds of thousands of personal computers throughout the world to ensure convenient and secure PC and network log-on. Over 50 million people have been enrolled using ID Safe systems, making this technology one of the most widely used on the planet.

Universal Access

Incorporating ID Safe technology into Identix access control products provides the first step toward "universal access"—an Enterprise-wide program that allows people to conveniently and securely access everything from the network to the front door, all with the touch of a finger. As access control increasingly becomes part of the corporate enterprise, Identix is uniquely positioned to leverage this connection. Our Information Technology and Access Control products work together offering you with the ultimate in convenience and security using the ultimate universal credential, your fingerprint.

Fingerscan V20 Specifications

Size.....	6.75"W x 6.5"H x 3.5"D 172mm W x 165mm H x 89mm D
Weight.....	2 lbs. (0.9 kg)
Power.....	6 to 24V DC, unregulated
Verification time.....	1 second typical
Enrollment read.....	Single finger placement, 5 seconds typical
Template size.....	300 bytes, typical
ID number.....	1 to 9 digits or card reader input
Transaction Storage.....	8000 transactions, buffered
Communications.....	RS485, Wiegand, RS232, TTL Optional Ethernet or modem
Baud Rate.....	300-56K bps
User Capacity.....	512 Standard Expandable to 32,000 users
Door Controls.....	Lock Output, Tamper Switch, 3 Auxiliary outputs, 4 Auxiliary inputs
Card Reader Input.....	Wiegand, proximity, magnetic stripe, Smart card, barcode
Card Reader Emulation Output.....	Wiegand, magnetic stripe
Timezones.....	30
Operating temp range.....	0 to 50 degrees C
Display.....	2 line, 16 characters

Options

- User Memory Expansions
 - 5,000 users
 - 16,000 users
 - 32,000 users
- Graphical LCD Display
- Integrated Proximity Card Reader
- Dial Up Modem
- Ethernet Communications, TCP/IP, 10Base T
- Power Supply

Fingerscan V20 features include:

Support for lock output and door monitoring, including tamper switch

Integration into existing card reader systems using Wiegand protocol

Fully integrated proximity and smart card options

Standalone or networked operation

Complete networking RS485 or RS232 (standard); optional Ethernet or dial-up modem available

One-touch enrollment

User memory expandable from 512 (standard) to over 32,000 users

Fully backward-compatible to Identix TouchLock II and Fingerscan units

Powerful Intel-based architecture for IT expandability

For more information on how Fingerscan V20 can help secure the success of your organization, contact Identix today.



Identix

Identix Incorporated

510 North Pastoria Avenue

Sunnyvale, California 94086 U.S.A.

408.731.2000 / 408.739.3308 (Fax)

www.identix.com