

EL-PT500 Series Smart PTZ Dome Camera

Smart Compact Integrated Dome Camera

Product Features

- 5.6" Compact Designed Color Dome Camera
- 375° Pan Rotation
- Continuous Auto Focus
- Variable Speed 1° ~ 400°
- Auto Turn Around
- 128 Presets
- Home Position
- Pan/Tilt Speed Proportional to Zoom Ratio
- Minimum illumination: 0.01 Lux (Optional)
 - Advanced DSP Camera
 - Auto White Balance
 - Backlight Compensation
 - Auto Iris Control
 - Electronic Shutter
- Remote Control via RS-485 and IR Remote Controller
- On Screen Display for Camera Control
- Rein-forced Dome Cover Resist up to 10 kg Out Force
- Build-in up to 6 Groups of Protocol
- Up to 5 Groups and 128 Preset Points
- Twist Lock Release from Base for Easy Installation and Servicing
- Optional Wall Mount Bracket and Outdoor Housing Available



Surface Mount Model



Pendent Mount Model

Optional Device



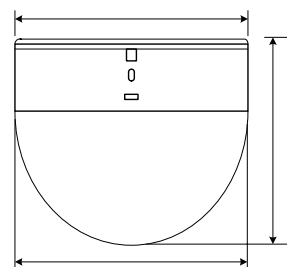
- Multi-function control key board: PTZ dome camera, matrix
- Support 2400, 4800 and 9600 baud rate
- 20 x 4 back light functions LCD to support use friendly interface
- Joystick control speed dome direction and speed
- Password protection
- Preset point edit function
- RS-232 port to download update software

TECHNICAL SPECIFICATION

Model	NTSC	EL-PT512-N	EL-PT511-N	EL-PT502-2N	EL-PT601-2N	EL-PT502-1N	EL-PT501-1N
	PAL	EL-PT512-P	EL-PT511-P	EL-PT502-2P	EL-PT601-2P	EL-PT502-1P	EL-PT501-1P
Pick-UP Device	1/4" COLOR CCD SONY SUPER HAD		1/3" COLOR CCD SONY SUPER HAD		1/3" COLOR CCD SHARP / PANASONIC		
Sync System	Internal synchronous						
Resolution	500 TVL	380 TVL	480 TVL	380 TVL	480 TVL	380 TVL	
Effective Pixels	NTSC	410K Pixel	270K Pixel	410K Pixel	270K Pixel	410K Pixel	270K Pixel
	PAL	470K Pixel	320K Pixel	470K Pixel	320K Pixel	470K Pixel	320K Pixel
Sensitivity (Star Light Mode)	0.07 Lux	0.05 Lux	0.5 Lux	0.3 Lux	0.5 Lux	0.3 Lux	
Lens	10x zoom lens 4.2~42mm F 1.8~2.9 (10x Digital zoom)		Vari-focal lens 3.5~8mm F1.6 (2x Digital zoom)		Fixed lens 6mm F2.0 (2x Digital zoom)		
S/N Ratio	50dB (AGC OFF)						
Iris lens	Auto / Manual		Auto DC Drive		A.E.S.		
Focus	Auto / Manual		Manual		Fixed lens		
Electronic shutter	NTSC:1/60 ~ 1/100,000 Sec. / PAL:1/50 ~ 1/100,000 Sec.						
Video output	1.0 Vp-p, 75Ω						
Gamma Correction	0.45 / 1		0.45				
Gain Control	Auto 0 ~ 18dB		36dB		AGC		
White Balance	ATW 3200 ~ 9600°K / AWC / FIX		ATW 2500°~9500°K / PTL		ATW 3200°~10000°K / AWC		
BLC	Super BLC / 48 zone BLC		On / Off (Option)				
OSD Function	OSD Menu						
Rotation mode	Auto Pan feature / Preset Position Patrol						
Rotation angle	Horizontal Pan 0°~375° / Vertical Tilt 0°~90°						
Rotation speed	Horizontal Pan 100°/sec / Vertical Tilt 100° /sec						
Speed setting	Auto: Approx.5~60°/ Sec(Variable) / Manual: Approx. 5~90°/ Sec(Variable) / Preset: Max. 100°/ Sec						
Stop times	0 ~ 99 Sec (Variable)						
DI	2 inputs						
DO	1output						
Preset	128 Points						
Control	Infrared Remote Control + RS-485 Control						
Max link	128 Cameras						
Preset precision	+/- 1 Deg						
Power supply	DC13.5V / 1.0A						
Ambient Operation	Temperature: -5°C ~ 60°C Less Than 10%~90% RH						
Installation location	Indoor Ceiling mounted / Flush mounted(EL-HS-B15) / Wall mounted with Bracket(EL-HS-B160)						
Material	Cover: Rugged dome / Base: ABS fireproof Fiberglass						
Color	Cover: gray / Base: Black						
Dimensions	Ø143 x H120mm (Ø5.6"x H4.7")						
Weight	0.6Kg		0.5Kg				
Approval	CE, FCC						

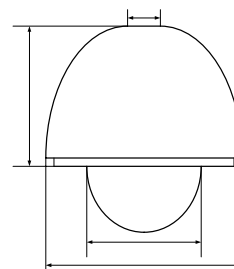
Surface Mount (Indoor)

- Build-in color dome system
- Quick and easy installation on any type of ceiling
- Injection molded plastic dome body
- 5.6" acrylic tinted dome cover
- Dome cover could resist 10kg outer force

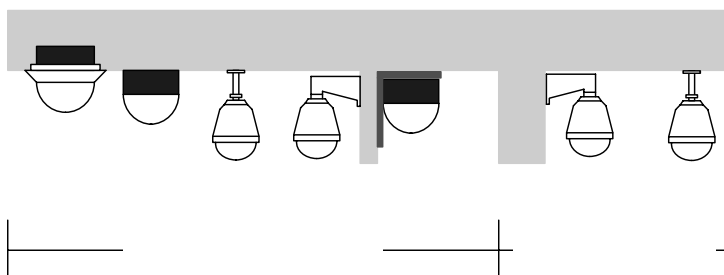


Environmental Pendant mount (Indoor/outdoor)

- Easy Installation
- Built in Fan / heater (optional)
- Optical Clear Dome Cover
- Different Pendant Available
- Environmentally Sealed and Weatherized
- Sun Shield



Dome Installation



Housing Pendant



Gooseneck Pendant

- Material: Steel

Straight Tube Pendant

- Material: Steel,

Developed and Manufactured by:
 Elitar Electronic Co., Ltd.
 仲翔電子股份有限公司
 235, 台北縣中和市中正路866-9號15樓
 15F, No. 866-9, Zhong Zheng Road,
 Zhong He, Taipei 235, Taiwan, R.O.C.
 Tel: 886-2-22264939 Fax: 886-2-22264938
 http:// www.elitar.com E-mail: sales@elitar.com

